

## Instructions for Goldtouch Semi-Vertical USB/Wired Mouse

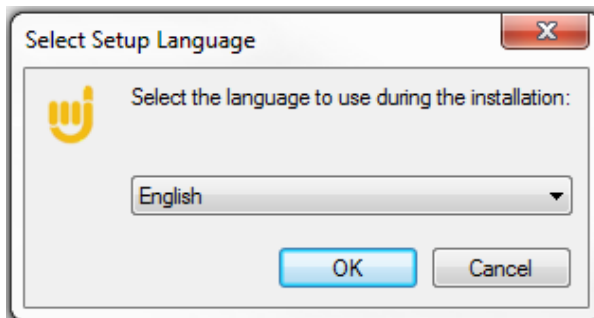
Note, this software will not work with the Semi-Vertical Wireless Mouse.

Install Goldtouch Semi-Vertical USB Mouse Software:

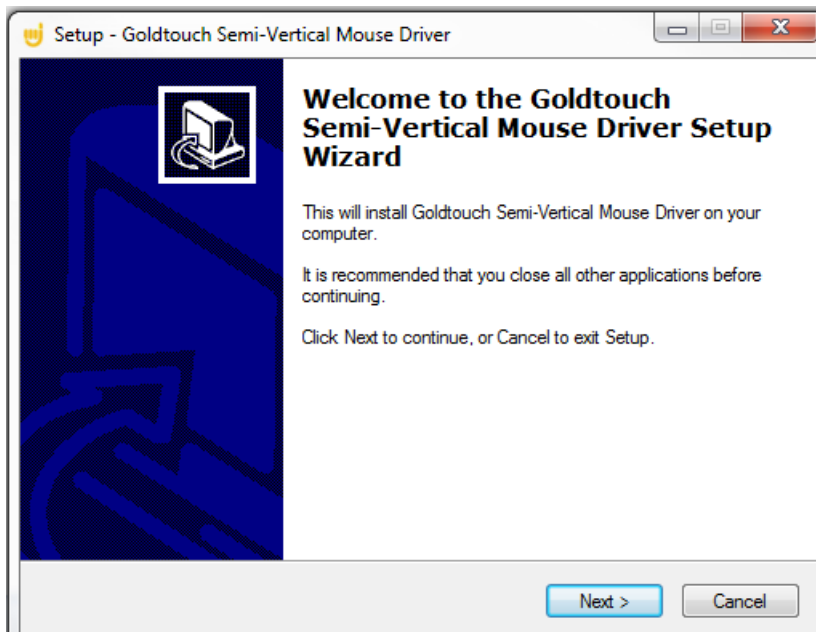
1. Download Goldtouch SV Mouse software by clicking [here](#) if you haven't already done so. Make sure to choose a location where you can find the setup file after it downloads.
2. Run the file once the download completes. The installer will take you through a few options that you may want to configure. If you don't understand a particular screen, we recommend just clicking **Next** to use the default settings.
3. At the end of the install, just click Finish and the Goldtouch Semi-Vertical software will automatically start.

Detailed Steps:

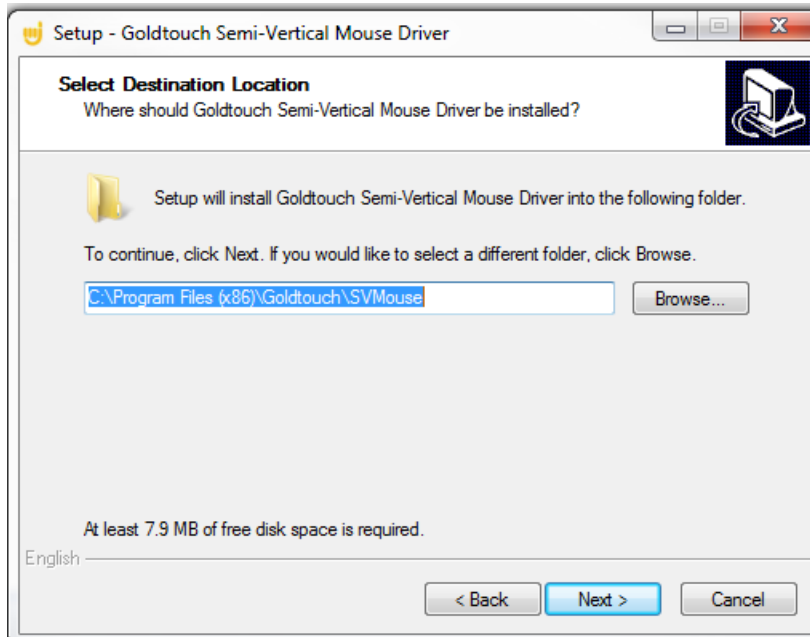
- 1) Choose your Language Setting. English and Chinese are supported. Make your Selection and click OK.



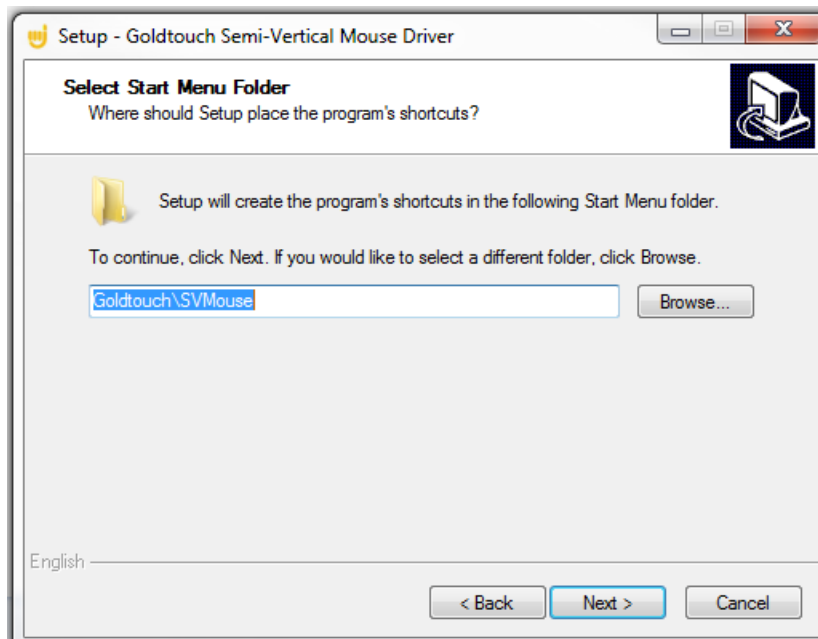
- 2) Welcome Screen. Select Next.



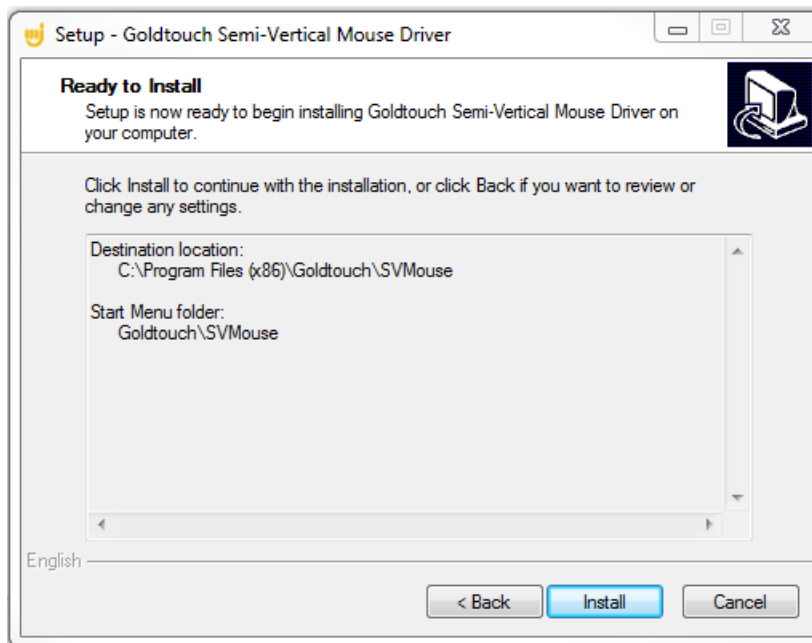
- 3) Program Location Selection. You may change the location but we recommend accepting the default location.



- 4) Start Menu Folder Location. You may change the location but we recommend accepting the default location.



5) Installation Review. Click Install to Proceed, or Back to change or review settings.



6) Completion. Select Finish



## Basic Functions

After the Semi-Vertical Mouse Driver Software has been installed, the Goldtouch Driver Software Utility will appear on your Task Bar and you will see this screen shown below:



Figure 1

## Key Settings

On the "Main" tab, there is a section called "Key Setting" where you can change basic button functions. Each button function corresponds to the numbers highlighted in Blue. The default settings are listed in Figure 1 above. To add custom programming, click the corresponding number you would like to change and then scroll through the options in the drop-down menu for selection. For example, if the user wants to switch the functionalities of the left and right mouse click buttons, the user can click on "Right Button" next to Key Setting 2 first and select Left Button from the drop down menu shown in Figure 2 below. (These two buttons must be configured in this order, otherwise the user will get an error message that one of the buttons needs to be configured to "click").



Figure 2

The next step would be to click on the "Left Button" next to Key Setting 1 and select Right Button on the drop down menu. After the key changes have been made, be sure to click "Apply" at the bottom right screen after you have made all your selections. These initial settings will be saved to Profile 1, which is the default profile. If you wish to add additional profiles, click on Profile 2, make your selections, click Apply, and so on.

You may store up to five unique profiles. These profiles can be accessed by clicking on the Profile Names at the bottom of the Main Application screen as shown in Figure 3 below. The mouse immediately changes to the selected profile.



Figure 3

\*Some of the key setting drop down choices that may need some explanation include the Key Combination and "Three click."

The Key Combination key lets the user enter a certain keystroke, such as "CTRL+C" (copy text), and apply that keystroke to a certain button on the mouse, in this case button 3 (the scroll wheel). Be sure to hit apply so that the button changes!



Figure 4



Figure 5

The "Three click" key allows users to get the same function of a double click.

One feature some users don't like is to see the LED light, so they can set one key, such as the "Forward key" as RGB ON/OFF, so users can turn on or turn off the LED light by clicking the Forward Key. Don't forget to hit "Apply" after making these changes!

The 6 Keys on the Semi-Vertical Mouse can be configured in any desired combination. If the user has multiple preferences for key combinations, click on the bottom row profiles (Profile 1, Profile 2, Profile 3. etc..) and customize the keys in any way desired.

### Advanced Functions

Just to the right side of the Main screen is the "Advanced" tab. These settings can be used to adjust the LED light display colors and light behavior. Experiment with the choices and pick your favorites.

The Advanced selections are stored in the same profile that is highlighted. If you have made unique Key Settings and Advanced selection on Profile 1, these selections will all be executed when Profile1 is selected.



Figure 6

## Macro Functions

The last tab is the "Macro" tab. This feature allows users to determine their own key combination in order to apply to their button of choice on the Semi-Vertical Mouse.

Let's take a look at its function. Figure 7 below shows the macro screen before any changes.



Figure 7

To create a macro, start by clicking on the "New Macro" button in the lower left hand corner of the screen.

Let's create a macro of Choose All (CTRL+A). A window will pop up to choose a macro name. Type in "ChooseAll."



Figure 8

The Macro you entered will appear on the Macro List.

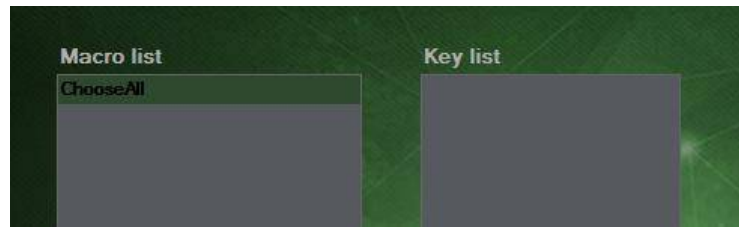


Figure 9

Click the start record button in the upper right hand corner (it will turn green when you click it).



Figure 10

You will then type in the appropriate key strokes. In this case, it is CTRL+A as shown in Figure 11.

Click these strokes at approximately the same time, they don't have to be exact as the timing is accounted for by the software.

Click the "stop record" button, and then click the green "save" button (right side, with grey background).





Figure 11

After this, be sure to hit the "apply button at the bottom of the screen. Then the macro is recorded and ready for use. Created Macros can be used in any of the five Profile options.

How to use this Macro you created:

Go back to the "Main" tab, and select any of the keys (1-6) under key settings. Perhaps you want to change the scroll button (3) to the ChooseAll Macro function. In this case click on the current button "Middle button" and on the drop down select the Macro button as shown below in Figure 12.



Figure 12

A pop up screen will show up with a Macro list. Select the macro you want and click Ok. Be sure to click the Apply button in the lower right corner after this!

Now whenever you want to "Choose All", as in CTRL+A, just click the scroll wheel button (button 3).

\*\*You can also follow these same steps for creating a macro in order to type out a message whenever clicking a button on the mouse\*\*

If you have any questions over the Semi-Vertical Mouse Driver or Macro, please email [support@goldtouch.com](mailto:support@goldtouch.com)